



FM 405
HUNTSVILLE, TEXAS
00.5 +/- ACRES | SEASONAL CREEK



FM 405



This 20.537-acre tract is one of the finest parcels in Walker County. It fronts FM 405, just about a half mile from Hwy 190. It has gorgeous hardwood and pine, plenty of homesite potential, and even a gorgeous 1.4-acre pond. This is a prime opportunity to relax and enjoy the peace and quiet this place offers.



Markham Realty
Selling Quality Texas Properties Since 1970
contact@markhamrealty.com
936-295-5989 | markhamrealty.com

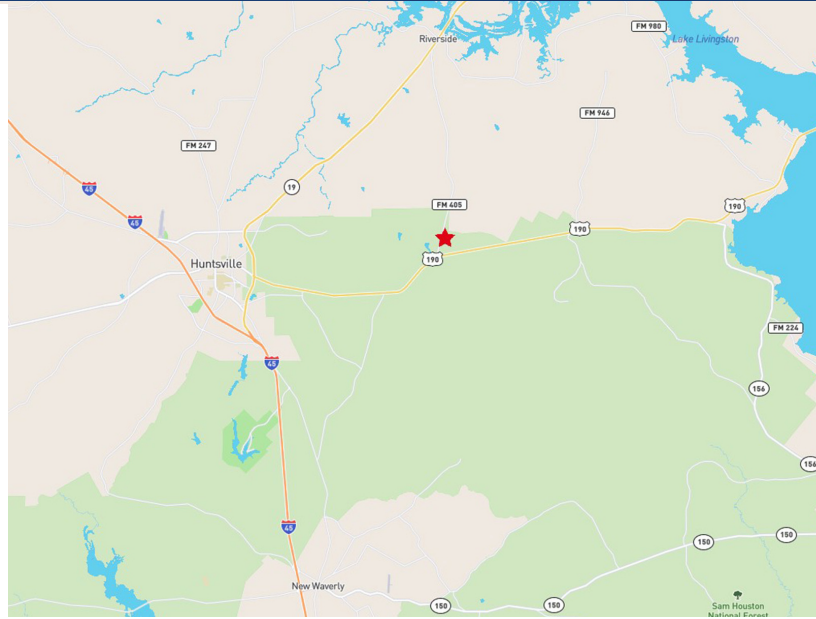
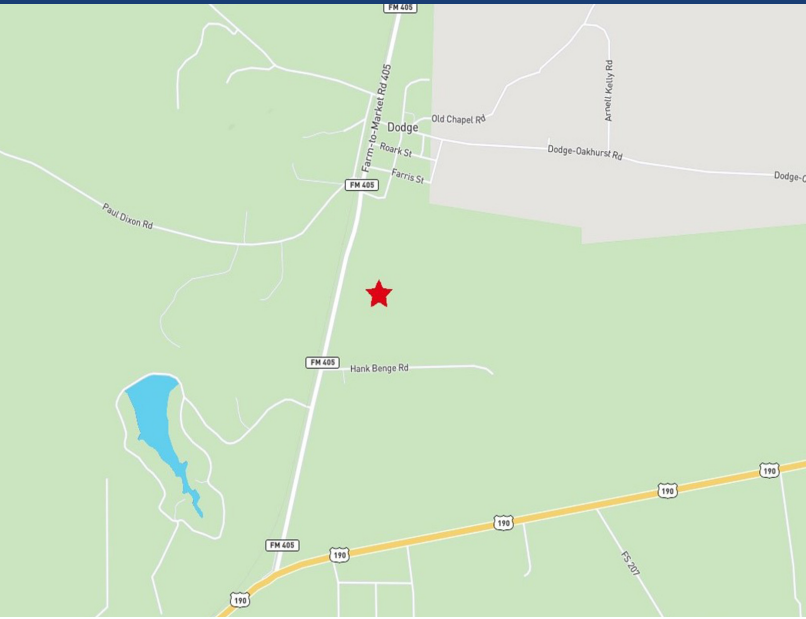


Scan here for additional information & photos.

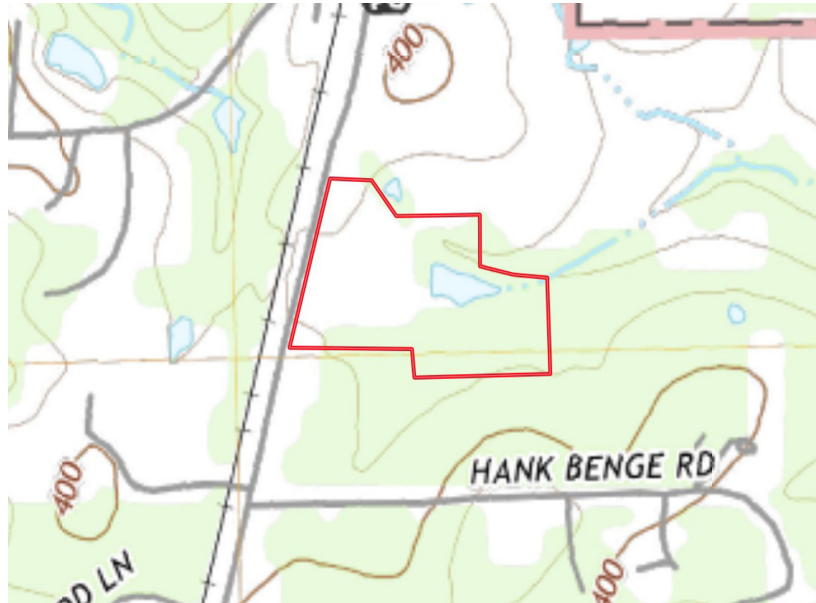
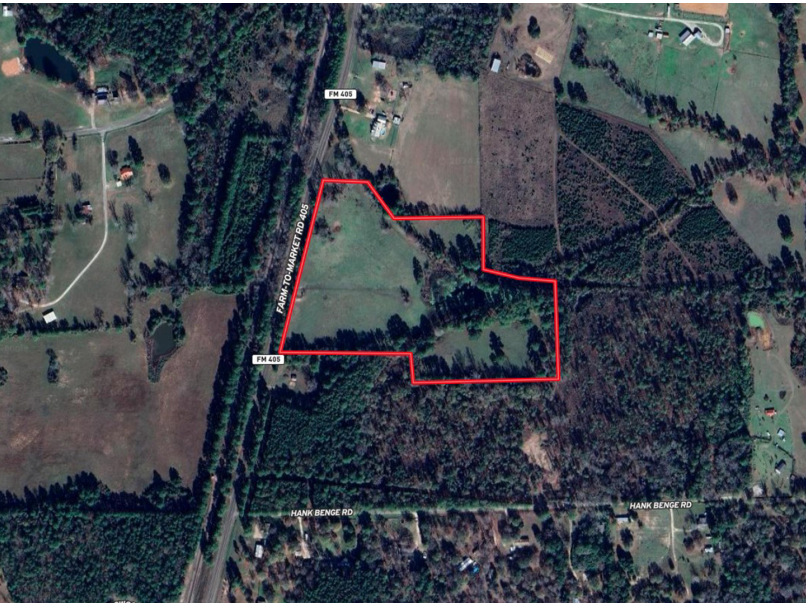


Information furnished is from sources deemed reliable, but is not guaranteed by Markham Realty, Inc. The offerings are subject to change in price, errors, omissions, prior sales, or withdrawal without notice. Square footage, acreage size and lot dimensions are approximate. All persons and firms named in this brochure are licensed brokers or salespersons. Markham Realty, Inc. will co-broker with any licensed Broker if Broker and/or agent accompanies his or her prospective buyer from the first (1st) showing forward.

FM 405 HUNTSVILLE, TEXAS



Just north of the intersection of FM 405 and Hwy 190 E



Markham Realty
Selling Quality Texas Properties Since 1970
contact@markhamrealty.com
936-295-5989 | markhamrealty.com



Scan here for additional information & photos.



Information furnished is from sources deemed reliable, but is not guaranteed by Markham Realty, Inc. The offerings are subject to change in price, errors, omissions, prior sales, or withdrawal without notice. Square footage, acreage size and lot dimensions are approximate. All persons and firms named in this brochure are licensed brokers or salespersons. Markham Realty, Inc. will co-broker with any licensed Broker if Broker and/or agent accompanies his or her prospective buyer from the first (1st) showing forward.